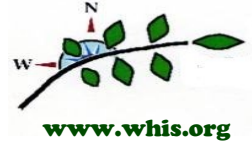




HORTICULTURE INSPECTION SOCIETY Western Chapter WINTER 2016 NEWSLETTER



In This Issue:

Page 1-3 Annual Meeting Review **Page 3** Save The Date **Page 4** Business Meeting Minutes
Page 5 Pest Alert **Page 6** WHIS Business Notes **Page 7** Membership Application

2015 Annual Meeting Re-Cap & Review September 28th - October 1st, 2015 - Salt Lake City, Utah



FRONT ROW: Kris Dow- UT, Beth Slate- CA, Nick Bieser- NV, Ellen Kragh- CA, Jamison Stiehr- CA, Gabriel Allen- WA, Cheryl Smith- CO, Marlea Stout- NV, Beth Eiring- MT, Aurelio Posadas- NPB, Ruben Arias- CA, Jack Wilkins- UT, Kristopher Watson- UT **BACK ROW:** Matthew Brooke- OR, Connie Jones- NM, Grant Tidwell- UT, Darrell Cook- UT, Amber Mendenhall- UT, Mark Ashcroft- UT, Miles Maynes- UT, Clark Burgess- UT, Julius Calso- CA.

Utah State Department of Agriculture and Food (UDAF) played host for our 2015 Annual Meeting. Our home base was the Sheraton Salt Lake City Hotel. Members enjoyed mild temperatures and cloudy skies with sun breaks throughout the week. UDAF provided a hospitality suite that members enjoyed after meeting activities, where refreshments were served and members got a chance to meet and greet old and new acquaintances. The hospitality suite was also the drop off point for silent auction items that were donated by participating states. This year our one and only fund raiser netted the WHIS treasury \$189. Members were also delighted to receive a “Utah’s Own” delectable assortment of products produced in Utah and provided by our hosts.

WHIS would like to recognize Jack Wilkins, Compliance Specialist, Plant Industry Division for organizing this year’s annual meeting and UDAF at providing for valuable training and information along with their genuine hospitality.

Thank You So Much!



<http://ag.utah.gov/>



<http://www.utahsown.org/>

WHIS 15th Annual Meeting - Salt Lake City, Utah



Informative Lectures



Sanitation Procedures



Surveying Knapweed



Nebo Loop Byway.



Devils Kitchen

Tuesday- Sept 29th: Our meeting began with a welcome and introductions. State Reports followed, where each state in attendance gave a brief summary of their agencies previous year's activities.

Next on the agenda were honeybee presentations. Utah has a long standing Apiary Program that was established in 1892. UDAF coordinates statewide honeybee registration and inspection program, in cooperation with County Bee Inspectors, with the goal to protect and manage colonies from abiotic and biotic threats through inspection, education and promotion of best management practices. Of interest to note is research being conducted out of Brigham Young University that utilizes phages for American Foulbrood Disease control. Plainly said, it is like inoculating bacteria with a virus for a natural method of eradication.

Final presentation of the day was on field eradication efforts for control of Squarrose Knapweed, *Centaurea virgata*. Methods include herbicide spray, mechanical control, and re-seeding. A long montage video rounded out the presentation. An onsite visit to this location followed during our field trip the next day.

Wednesday- September 30th: Our field trip day began at "Houweling Tomatoes" sustainable greenhouse farm. Houweling's patented "Ultra Cima" greenhouse system was built next to an existing natural gas power plant. They are able to take wasted heat and CO² from the power plant that is diverted directly into the greenhouse. This combined with supplemental lighting helps deliver fresh tomatoes 365 days a year. Required sanitation prior to entering the greenhouse included footbaths, hand washing, sanitary coveralls, shoe covers and hair nets.

After stopping by the knapweed-reseeding project (*previous day's presentation*) we continued on to the Nebo Loop Byway. This byway crosses the Uinta National Forest, climbing over 9,000 feet in elevation and provided exceptional views of Utah Valley, the Wasatch Mountains, and Mount Nebo, the tallest mountain in this range.

Along the "Loop" we stopped at "Devil's Kitchen" for lunch and a presentation by a US Forest Service entomologist that lectured on various issues affecting forest health. The Devils Kitchen is a geological formation with an observation area overlooking a 700 ft. amphitheater with eroded red sandstone pinnacle formations.

(Continued Next Page)

WHIS 15th Annual Meeting - Salt Lake City, Utah



Thursday- October 1st: This day was filled mostly with lectures from Utah State University professionals on problematic insects including Marmorated Stink Bug, Emerald Ash Borer, Cactus Moth, Drosophila and various other fruit fly species. Other topics included bio-control for invasive weeds, native plants, and USU's breeding program to introduce new native plant cultivars for the inter-mountain west climate.



WHIS sponsored a representative from Oregon Pride Nursery to attend our annual meeting and provide an industry perspective on the "Systems Approach to Nursery Certification (SANC). Oregon Pride is one of eight nurseries selected to participate in this pilot program. The goal of the National Plant Board's SANC initiative is to develop, promote, and implement a risk based nursery certification system utilizing existing state authorities and programs, to enhance uniformity, increase efficiency, and reduce pest distribution threats from interstate movement of nursery stock. Our Annual Business Meeting followed this discussion.

SAVE THE DATE

WHIS 16th ANNUAL MEETING

October 11 - 14, 2016

Albuquerque, New Mexico



Plans are already under way for our next annual meeting. Our Host State has selected "Hotel Albuquerque" for our meeting venue, and are currently planning for the agenda. If you have any ideas or comments concerning agenda topics, or if you would like additional information, please contact:
Bethany Abrahamson babrahamson@nmda.nmsu.edu or
Bill Segura wsegura@nmda.nmsu.edu

MARK YOUR CALENDARS !

WHIS 15th Annual Meeting – Salt Lake City, Utah
Business Meeting Minutes - Oct 1, 2015 – 5:00pm

Attending: Ruben Arias – President; Jack Wilkins - Vice President; Beth Eiring – Immediate Past President; Marlea Stout – Treasurer; Cheryl Smith – newly elected Secretary; Aurelio Posadas – Advisor, National Plant Board; Matthew Brooke – Oregon Pride Nursery

Approval of Minutes of Sept. 22, 2015 – tabled until next conference call.

Treasurer's Report - \$189 made on the Silent Auction

Secretary - Cheryl Smith -CO nominated by Beth Eiring for position of Secretary – passed.

Immediate Past President – Beth Eiring has volunteered to maintain an email list to include SPRO's and Supervisors to help encourage more than one attendee from each state. This is our first newly created standing committee- Beth as Chairman.

President - Ruben Arias thanked all who were involved and esp. new attendees such as Gabriel Allen from Washington and returnees from last year's San Diego convention-Julius and Jamison-San Diego County
Secretary to send 'Thank You' cards to all presenters and others involved – Cheryl will need names and addresses.

Old Business – New WHIS Logo – only has N and W on it. Should we add E and S? Should be put to a vote of the membership.

New Business –

- Next year's annual conference. Oct. 4, 5, 6, 2016 with travel days of Oct. 3 and 7. It is hoped that Arizona would host the conference next year to include a border tour. The order is AZ, WA, NV, OR.
- Aurelio Posadas (NPB) has informed us that we have a meeting planner available to us through the National Plant Board at no cost to us. He gets his pay from the hotel bookings. Hershel Goldsherr of Helms Bristoe.
- Aurelio was Thanked for his wonderful presentation.
- Create a Standard Operating Procedures file for the next State conference.
- More outreach to membership.
- Breakdown of room reservations helpful.

In conclusion – The 'Gavel' was passed to Jack Wilkins who will now take over as President. Jack will be attending the Central Chapter of the Horticulture inspectors Society.

Next Meeting – Tues. Nov. 3, 2015 at 10:00 MT, 9:00 Pacific – Conference Call.

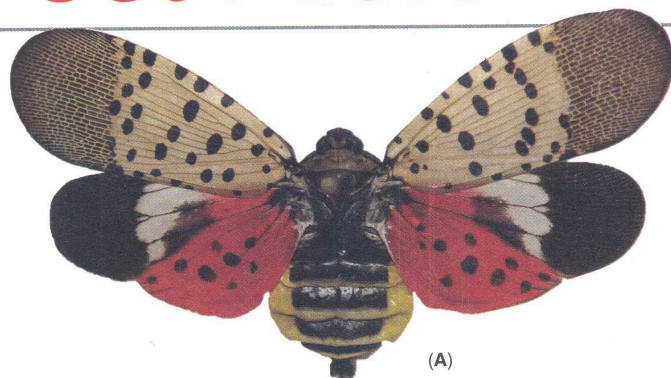
Possible items for the agenda:

- Location for next year's meeting – AZ or other?
- Change By-laws to have the Vice-President preside over the conference.
- Logo change
- Approval of minutes from Sept. 22, 2015
- John Wraspir's suggestions for future newsletters – How many, when, content.

Meeting adjourned – 5:50pm]oigh

Respectfully submitted on Oct. 27, 2015 by Cheryl Smith - CO

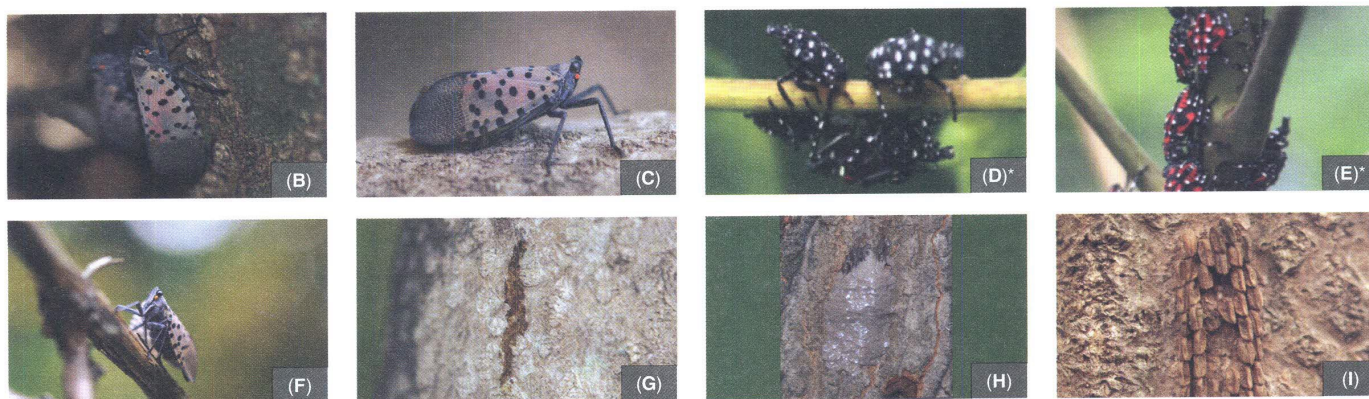
Pest Alert



Spotted Lanternfly

Lycorma delicatula (WHITE)
(Hemiptera: Fulgoridae)

The Spotted Lanternfly, *Lycorma delicatula* (White), an invasive planthopper, has been discovered in Berks County, Pennsylvania. It is native to China, India, Vietnam, and introduced to Korea where it has become a major pest. This insect attacks many hosts including grapes, apples, stone fruits, and tree of heaven and has the potential to greatly impact the grape, fruit tree, and logging industries. Early detection is vital for the protection of Pennsylvania businesses and agriculture.



*Photos courtesy of Park et al. 2009, *Biological Characteristics of Lycorma delicatula and the Control Effects of Some Insecticides*.

(A) Spotted Lanternfly showing the fore and hind wings (B) Resting against bark (C) Lateral view (D) Early nymphs (E) Late nymphs (F) Feeding on wild *Vitis* sp. (G) Weeping sap trail on tree (H) Egg mass covered in waxy coating (I) Old hatched egg mass on a trunk.

Identification:

The Spotted Lanternfly adult is approximately 1" long and 1/2" wide at rest. The forewing is grey with black spots and the wings tips are reticulated black blocks outlined in grey (A, B, C). The hind wings have contrasting patches of red and black with a white band (A). The legs and head are black; the abdomen is yellow with broad black bands. Immature stages are black with white spots, and develop red patches as they grow (D,E).

Hosts:

In the fall, adults congregate on tree of heaven (*Ailanthus altissima*) (F), willows (*Salix* sp.), and other trees, in groups of up to 20. Egg masses will be laid on medium to large trees, on trunk, branches, and limb bases. After hatching in the spring, nymphs will move off the tree and search out new hosts, including several kinds of agricultural crops. In Korea, it has been reported to attack 65 different species, 25+ of which are known to grow in Pennsylvania.

Signs and Symptoms:

Trees, such as tree of heaven and willow, will develop weeping wounds. These wounds will leave a greyish or black trail along the trunk (G). This sap will attract other insects to feed, notably wasps and ants. In late fall, adults will lay egg masses on host trees and nearby smooth surfaces like stone, outdoor furniture, vehicles, and structures. Newly laid egg masses have a grey mud-like covering which can take on a dry cracked appearance over time (H). Old egg masses appear as rows of 30-50 brownish seed-like deposits in 4-7 columns on the trunk, roughly an inch long (I).

What to do:

If you see egg masses, scrape them off, double bag them and throw them away. You can also place the eggs into alcohol or hand sanitizer to kill them. Please report all destroyed egg masses on our website listed below.

Collect a specimen: Specimens of any life stage can be turned in to the Pennsylvania Department of Agriculture's Entomology lab for verification. Directions for submission are on the reverse side of this alert.

Take a picture: A photograph of any life stage (including egg masses) can be submitted to Badbug@pa.gov.

Report a site: If you can't take a specimen or photograph, call the Automated Invasive Species Report Line at 1-866-253-7189 and leave a message detailing your sighting and contact information.

For up to date information, visit:
www.pda.state.pa.us/spottedlanternfly

By: Lawrence Barringer, Entomologist
Pennsylvania Department of Agriculture



WHIS BUSINESS NOTES



The purpose of this chapter shall be:

- (1) To promote high standards of horticultural and regulatory inspection work;
- (2) To combine and share expertise, knowledge, experience and training among plant pest inspectors toward stimulating interest in and professionalizing plant inspection work;
- (3) To provide a means of furthering fellowship among plant pest inspectors and allied workers;
- (4) To provide a means of disseminating information to plant pest inspectors, allied workers and the general public that is particularly pertinent to plant pest inspection work;
- (5) To advocate harmonization between State and affiliated agencies.

EXECUTIVE COMMITTEE BOARD MEMBERS

President:

Jack Wilkins
Utah Dept. of Agriculture
PH: 801.851.7794
E-mail: jwilkins@utah.gov

Treasurer:

Marlea Stout
Nevada Dept. of Agriculture
PH: 775.353.3677
E-mail: mstout@agri.nv.gov

Vice-President:

Bethany Abrahamson
New Mexico Dept. of Agriculture
PH: 505.697.6988
E-mail: babrahamson@nmda.nmsu.edu

Editor:

John Wraspir
Washington Dept. of Agriculture
PH: 360.410.1260
E-mail: JWraspir@agr.wa.gov

Secretary:

Cheryl Smith
Colorado Dept. of Agriculture
PH: 303.869.9073
E-mail: cheryl.smith@state.co.us

Website:

Lisa Rehms
Oregon Dept. of Agriculture
PH: 503.559.9097
E-mail: lrehms@oda.state.or.us





2016 MEMBERSHIP APPLICATION AND RENEWAL

PLEASE CHECK APPROPRIATE CATEGORY:

NEW MEMBER _____ RENEWAL _____

PLEASE PRINT:

NAME: _____

POSITION: _____

ADDRESS: _____

CITY: _____ STATE: _____ ZIP CODE: _____

PHONE: _____ FAX: _____

E-MAIL: _____

PLEASE MARK BOX IF YOU DO NOT WANT YOUR CONTACT INFORMATION POSTED ON OUR WEBSITE.

**CHECKS IN THE AMOUNT OF \$20.00 SHOULD BE MADE PAYABLE TO:
*HORTICULTURAL INSPECTION SOCIETY – WESTERN CHAPTER***

PLEASE RETURN THIS COMPLETED FORM AND CHECK TO:

Marlea Stout, Nevada Department of Agriculture, 405 S 21st, Sparks, NV 89431